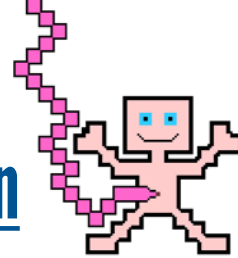


Obstetric Abdominal Examination



Instructions - “*Perform an obstetric abdominal examination on this patient*”

1	Washes hands	
2	Introduces themselves & confirms patient details	
3	Explains examination & gains consent	
4	Requests a chaperone	
5	Positions & exposes patient appropriately	
6	Inspects the abdomen	
7	Performs light palpation of the abdomen (<i>all 9 regions</i>)	
8	Palpates the uterus	
9	Determines fetal lie	
10	Assesses presentation of the fetus	
11	Measures symphyseal-fundal height	
12	Assesses level of fetal engagement	
13	Observes patient's face throughout examination and ensures patient is comfortable	
14	Thanks patient	
15	Washes hands	
16	Summarises salient findings	
17	Suggests further assessments & investigations	

Read the full guide at
GEEKYMEDICS.COM



Download our
OSCE APP

